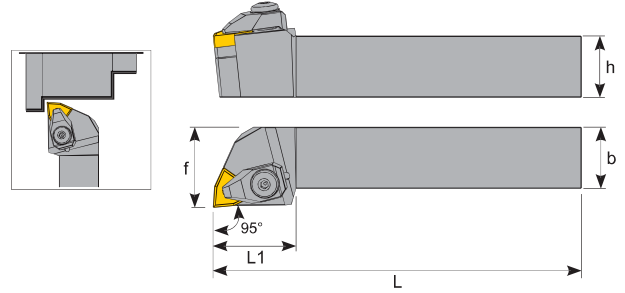


## 95° DWLNR

## External Turning Holders

## Klemmdrehhalter

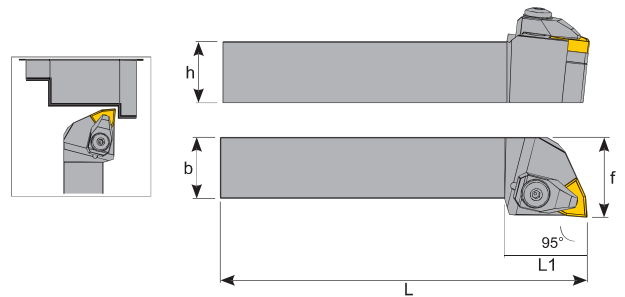
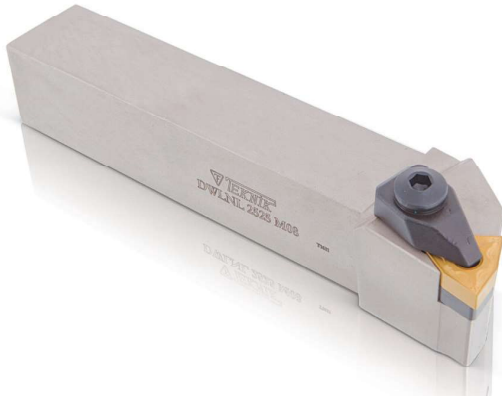


Sipari Kodu Order Code Bestell Code	ÜRÜN KODU Product Code Produkt-Code	Dimensions (mm) Abmessungen (mm)					Wendeplatte	ÇİVATASI ng Screw	ALTLIK Shim	ALTLIK ÇİVATASI Shim Screw	BASKI KEPİ Clamp	YAY Spring	PUL Stamp	ANAHTAR Allen Key
		L	L1	h	f	b								
D181	DWLNR 1616 H06	100	28	16	20	16								
D177	DWLNR 2020 K06	125	30	20	25	20	WN □ 0604	TC 046 M5	TA 021	TC 045 M3	BK 024	BY 041	BP 031	3 ALLEN
D179	DWLNR 2525 M06	150	30	25	32	25								
D176	DWLNR 2020 K08	125	35	20	25	20								
D178	DWLNR 2525 M08	150	35	25	32	25	WN □ 0804	TC 044 M5	TA 020	TC 083 M5	BK 020	BY 040	BP 030	4 ALLEN
D180	DWLNR 3232 P08	170	35	32	40	32								

## 95° DWLNL

## External Turning Holders

## Klemmdrehhalter



Sipariş Kodu Order Code Bestell Code	ÜRÜN KODU Product Code Produkt-Code	ÖLÇÜLER (mm) Dimensions (mm) Abmessungen (mm)					KULLANILAN UÇ Insert	BASKI ÇİVATASI Locking Screw	ALTLIK Shim	ALTLIK ÇİVATASI Shim Screw	BASKI KEPİ Clamp	YAY Spring	PUL Stamp	ANAHTAR Allen Key
		L	L1	h	f	b	Wendeplatte	Verriegelungsschraube	Schiff	Schiffsschraube	Spannpratze	Feder	Feder	Schraubendreher
D328	DWLNL 1616 H06	100	28	16	20	16								
D329	DWLNL 2020 K06	125	30	20	25	20	WN □ 0604	TC 046 M5	TA 021	TC 045 M3	BK 024	BY 041	BP 031	3 ALLEN
D319	DWLNL 2525 M06	150	30	25	32	25								
D316	DWLNL 2020 K08	125	35	20	25	20								
D318	DWLNL 2525 M08	150	35	25	32	25	WN □ 0804	TC 044 M6	TA 020	TC 083 M5	BK 020	BY 040	BP 030	4 ALLEN
D320	DWLNL 3232 P08	170	35	32	40	32								