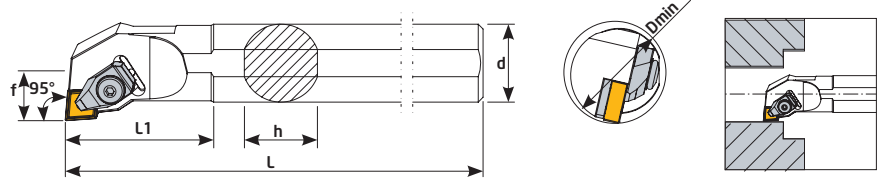
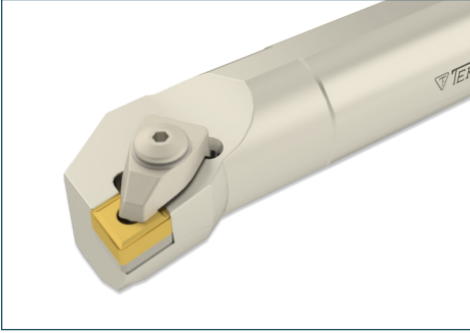
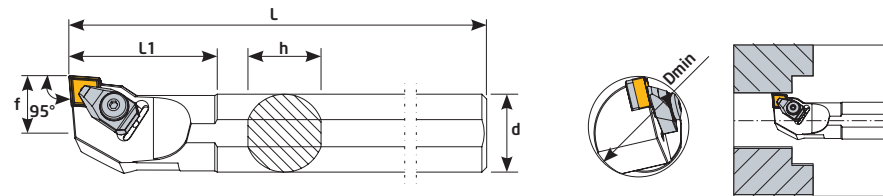
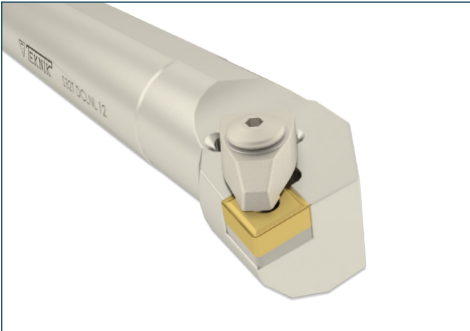


95° DCLNR



Sipariş Kodu Order Code Best.-Nr.	Stok/Stock/Lager	Ürün Kodu Product Code Produkt-Code	Ölçüler (mm) Dimensions (mm) Abmessungen (mm)							Kullanılan Uç Insert WSP	Baskı Cıvatası Locking Screw Verriegelungs Schraube	Altlık Shim U-Platte	Altlık Cıvatası Shim Screw U-Platte Schraube	Baskı Kepi Clamp Spannpratze	Yay Spring Feder	Pul Washer U-Scheibe	Anahtar Allen Key Inbuss-Schlüssel								
			Dmin	d	L	L1	f	h	kg																
K400	●	S25S DCLNR 12	32	25	250	50	17	23	0,964	CN-- 1204	TC044 M6	TA016	TC038 M4x10	BK020	BY040	BSP030	4 Allen								
K402	●	S32T DCLNR 12	40	32	300	60	22	30	1,867																
K404	●	S40T DCLNR 12	50	40	300	60	27	38	2,845																
K406	●	S50U DCLNR 12	63	50	350	60	35	47	5,166																
K370	●	S32U DCLNR 16	40	32	350	60	22	30	2,272									CN-- 1606	TA022	TC095 M5x11,8	BK018				
K371	●	S40U DCLNR 16	50	40	350	60	27	38	3,550																
K374	●	S40U DCLNR 19	50	40	350	60	27	38	3,503									CN-- 1906	TC048 M8	TA017	TC039 M6x12	BK025	BY044	BSP032	
K375	●	S50V DCLNR 19	63	50	400	60	35	47	6,333																

95° DCLNL



Sipariş Kodu Order Code Best.-Nr.	Stok/Stock/Lager	Ürün Kodu Product Code Produkt-Code	Ölçüler (mm) Dimensions (mm) Abmessungen (mm)							Kullanılan Uç Insert WSP	Baskı Cıvatası Locking Screw Verriegelungs Schraube	Altlık Shim U-Platte	Altlık Cıvatası Shim Screw U-Platte Schraube	Baskı Kepi Clamp Spannpratze	Yay Spring Feder	Pul Washer U-Scheibe	Anahtar Allen Key Inbuss-Schlüssel
			Dmin	d	L	L1	f	h	kg								
K480	●	S25S DCLNL 12	32	25	250	50	17	23	0,964	CN-- 1204	TC044 M6	TA016	TC038 M4x10	BK020	BY040	BSP030	4 Allen
K482	●	S32T DCLNL 12	40	32	300	60	22	30	1,867								
K484	●	S40T DCLNL 12	50	40	300	60	27	38	2,845								
K486	●	S50U DCLNL 12	63	50	350	60	35	47	5,166								