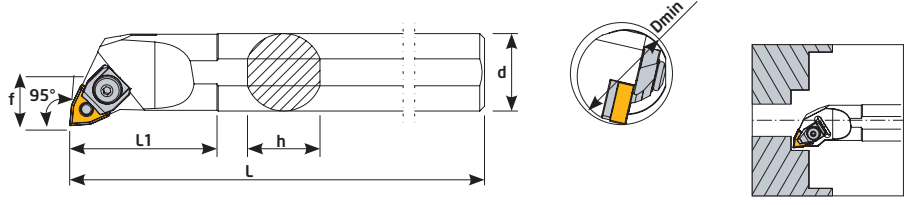
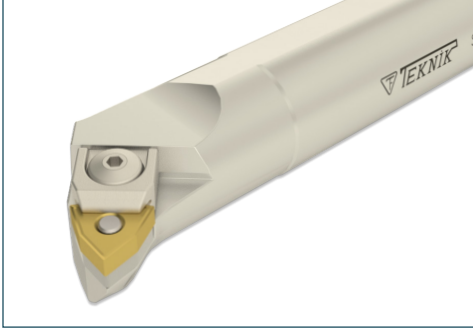
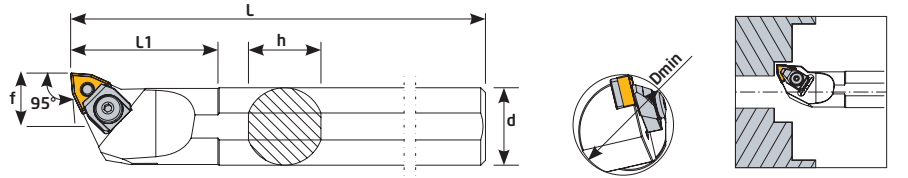
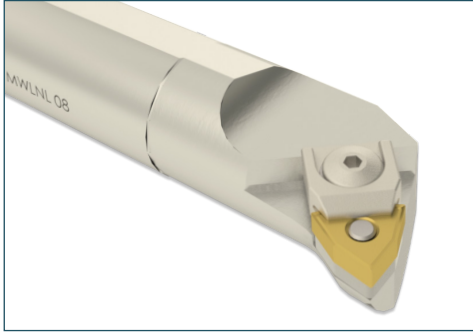


95° MWLNR



Sipariş Kodu Order Code Best.-Nr.	Stok/Stock/Lager	Ürün Kodu Product Code Produkt-Code	Ölçüler (mm) Dimensions(mm) Abmessungen (mm)							Kullanılan Uç Insert WSP	Baskı Civatası Locking Screw Verriegelungs Schraube	Altlık Shim U-Platte	Altlık Pimi Lock Pin Rohrstift	Baskı Kepi Clamp Spann pratze	Yay Spring Feder	Pul Washer U-Scheibe	Anahtar Allen Key Inbuss-Schlüssel
			Dmin	d	L	L1	f	h	kg								
K427	●	S16Q MWLNR 06	20	16	180	40	11	15	0,286	WN--0604	TC046 M5	--	BSP020	BK019	BY041	--	3 Allen
K427-1	●	S20R MWLNR 06	25	20	200	50	13	18	0,502								
K428	●	S25S MWLNR 08	32	25	250	45	17	23	0,945	WN--0804	TC044 M6	TA020	BSP021	BK026	BY040	BSP030	4 Allen
K430	●	S32T MWLNR 08	40	32	300	60	22	30	1,833								
K432	●	S40T MWLNR 08	50	40	300	60	27	38	2,841								
K434	●	S50U MWLNR 08	63	50	350	65	35	47	5,110								

95° MWLNL



Si- parış Kodu Order Code Best.-Nr.	Stok/Stock/Lager	Ürün Kodu Product Code Produkt-Code	Ölçüler (mm) Dimensions(mm) Abmessungen (mm)							Kullanılan Uç Insert WSP	Baskı Civatası Locking Screw Verriegelungs Schraube	Altlık Shim U-Platte	Altlık Pimi Lock Pin Rohrstift	Baskı Kepi Clamp Spann pratze	Yay Spring Feder	Pul Washer U-Scheibe	Anahtar Allen Key Inbuss-Schlüssel
			Dmin	d	L	L1	f	h	kg								
K510	●	S25S MWLNL 08	32	25	250	45	17	23	0,945	WN--0804	TC044 M6	TA020	BSP021	BK026	BY040	BSP030	4 Allen
K512	●	S32T MWLNL 08	40	32	300	60	22	30	1,833								
K514	●	S40T MWLNL 08	50	40	300	60	27	38	2,841								
K516	●	S50U MWLNL 08	63	50	350	65	35	47	5,110								