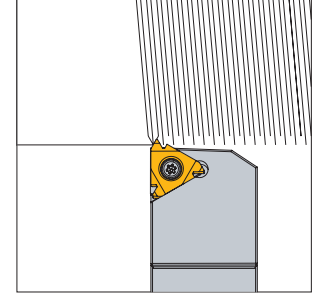
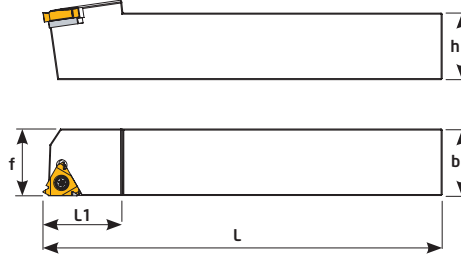
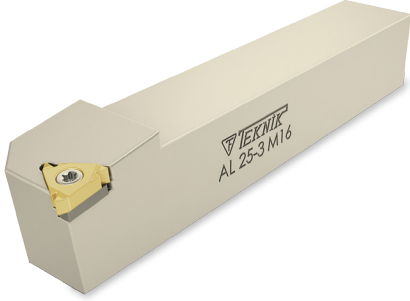


Dış Çap Dış Kateri/R

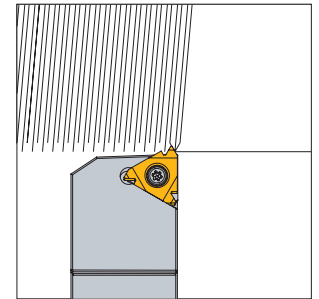
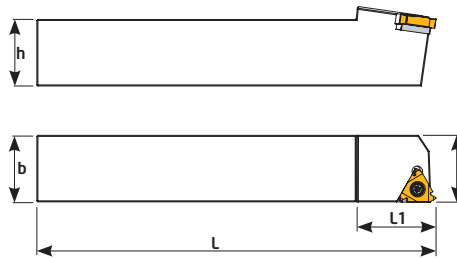
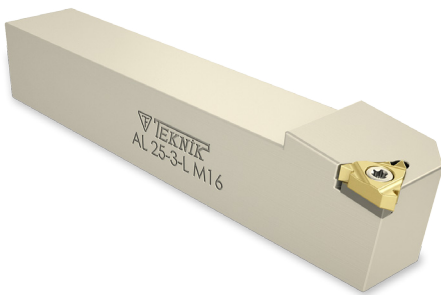
External Threading Toolholders/R



Sipariş Kodu Order Code Best.-Nr.	Stok/Stock/Lager	Ürün Kodu Product Code Produkt-Code	Ölçüler (mm) Dimensions(mm) Abmessungen (mm)						Kullanılan Uç Insert WSP	Sıkma Civatası Clamp Screw Torx-Schraube	Altık Shim U-Platte	Altık Civatası Shim Screw U-Platte Schraube	Anahtar Torx Key Torx-Schlüssel
			L	L1	h	f	b						
D261	●	AL 1212 J16- ER16	110	20	12	16	12	0,144					
D259	●	AL 1616 H16- ER16	100	22	16	16	0,250						
D258	●	AL 2020 K16- ER16	125	25	20	20	0,416						
D260	●	AL 2525 M16- ER16	150	30	25	25	0,754						
D262	●	AL 3232 P16- ER16	170	30	32	32	1,436						
D266	●	AL 2525 M22- ER22	150	30	25	25	0,748			---	---		

Dış Çap Dış Kateri/L

External Threading Toolholders/L



Sipariş Kodu Order Code Best.-Nr.	Stok/Stock/Lager	Ürün Kodu Product Code Produkt-Code	Ölçüler (mm) Dimensions(mm) Abmessungen (mm)						Kullanılan Uç Insert WSP	Sıkma Civatası Clamp Screw Torx-Schraube	Altık Shim U-Platte	Altık Civatası Shim Screw U-Platte Schraube	Anahtar Torx Key Torx-Schlüssel
			L	L1	h	f	b						
D268	●	AL 2020 K16- IR16	125	25	20	20	0,416						
D269	●	AL 2525 M16- IR16	150	30	25	25	0,754						
D266-1	●	AL 2525 M22- IR22	150	30	25	25	0,748						