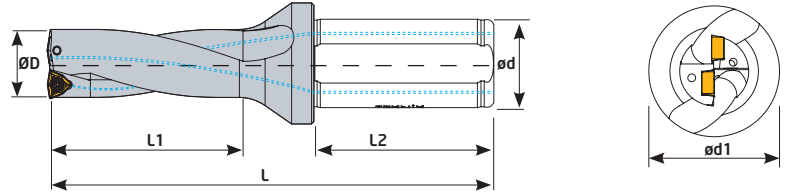
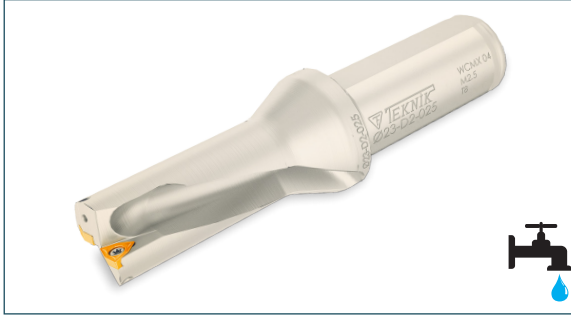


D2 WCM_



Sipariş Kodu Order Code Best.-Nr.	Stok/Stock/Lager	Ürün Kodu Product Code Produkt-Code	Ölçüler (mm) Dimensions(mm) Abmessungen (mm)							Kullanılan Uç Insert WSP	Sıkma Cıvatası Clamp Screw Torx-Schraube	Anahtar Torx Key Torx-Schlüssel
			ØD	Ød	d1	L	L1	L2	kg			
U104	●	16 D2 WCM_03	16	25	34	108	32	56	0,294	WCM_0302 KRLY	TC060 M2,5x5,5	T8
U105	●	17 D2 WCM_03	17	25	34	110	34	56	0,293			
U106	●	18 D2 WCM_03	18	25	34	113	36	56	0,303			
U107	●	19 D2 WCM_03	19	25	34	115	38	56	0,312			
U108	●	20 D2 WCM_04	20	25	34	119	40	56	0,327			
U110	●	21 D2 WCM_04	21	25	34	121	42	56	0,340			
U112	●	22 D2 WCM_04	22	25	34	123	44	56	0,345			
U114	●	23 D2 WCM_04	23	25	34	127	46	56	0,370			
U116	●	24 D2 WCM_05	24	25	34	130	48	56	0,390			
U118	●	25 D2 WCM_05	25	25	34	133	50	56	0,420			
U120	●	26 D2 WCM_05	26	25	34	135	52	56	0,420	WCM_0503 KRLY	TC065 M3x7	
U122	●	27 D2 WCM_05	27	25	34	137	54	56	0,450			
U124	●	28 D2 WCM_05	28	25	39	140	56	56	0,491	WCM_06T3 KRLY	TC067 M3,5x8,5	T15
U126	●	29 D2 WCM_05	29	25	39	142	58	56	0,515			
U128	●	30 D2 WCM_06	30	32	44	151	60	58	0,755			
U130	●	31 D2 WCM_06	31	32	44	154	62	58	0,775			
U132	●	32 D2 WCM_06	32	32	44	156	64	58	0,802			
U134	●	33 D2 WCM_06	33	32	44	159	66	58	0,845			
U136	●	34 D2 WCM_06	34	32	44	161	68	58	0,851			
U137	●	35 D2 WCM_06	35	32	44	164	70	58	0,900			
U138	●	36 D2 WCM_06	36	32	44	167	72	58	0,970			
U139	●	37 D2 WCM_06	37	32	44	170	74	58	0,875			
U140	●	38 D2 WCM_06	38	32	44	173	76	58	0,975			
U141	●	39 D2 WCM_06	39	32	44	175	78	58	1,006			
U142	●	40 D2 WCM_06	40	32	44	178	80	58	1,007			

KRLY ucuna uygundur. / Compatible with KRLY insert. / Kompatibel für KRLY WP