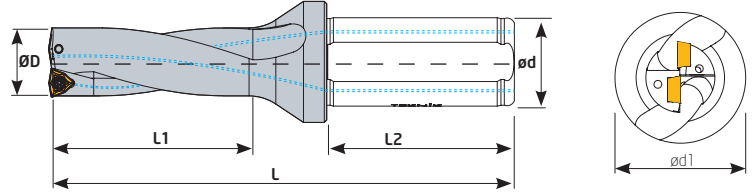
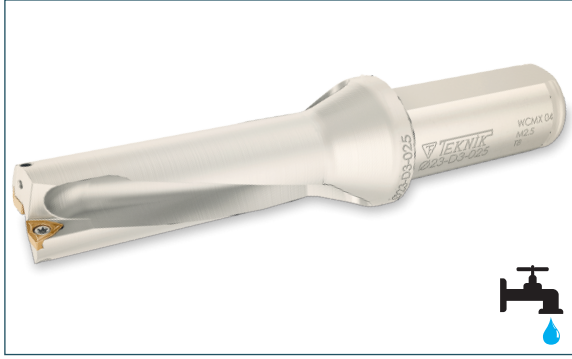


D3 WCM_



| Sipariş Kodu Order Code Best.-Nr. | Stok/Stock/Lager | Ürün Kodu Product Code Produkt-Code | Ölçüler (mm) Dimensions(mm) Abmessungen (mm) | | | | | | | Kullanılan Uç Insert WSP | Sıkma Civatası Clamp Screw Torx-Schraube | Anahtar Torx Key Torx-Schlüssel |
|---|------------------|---|--|----|----|-----|-----|----|-------|--------------------------------|--|---------------------------------------|
| | | | ØD | ød | d1 | L | L1 | L2 | kg | | | |
| U170 | ● | 30 D3 WCM_06 | 30 | 32 | 44 | 181 | 90 | 58 | 0,847 | WCM_06T3 KRLY | TC067 M3,5x8,5 | T15 |
| U171 | ● | 30,5 D3 W_M_06 | 30,5 | 32 | 44 | 181 | 90 | 58 | 0,844 | | | |
| U172 | ● | 31 D3 WCM_06 | 31 | 32 | 44 | 185 | 93 | 58 | 0,872 | | | |
| U174 | ● | 32 D3 WCM_06 | 32 | 32 | 44 | 188 | 96 | 58 | 0,921 | | | |
| U176 | ● | 33 D3 WCM_06 | 33 | 32 | 44 | 192 | 99 | 58 | 0,973 | | | |
| U178 | ● | 34 D3 WCM_06 | 34 | 32 | 44 | 195 | 102 | 58 | 1,037 | | | |
| U179 | ● | 35 D3 WCM_06 | 35 | 32 | 44 | 199 | 105 | 58 | 1,082 | | | |
| U180 | ● | 36 D3 WCM_06 | 36 | 32 | 44 | 203 | 108 | 58 | 1,092 | | | |
| U181 | ● | 37 D3 WCM_06 | 37 | 32 | 44 | 207 | 111 | 58 | 1,141 | | | |
| U182 | ● | 38 D3 WCM_06 | 38 | 32 | 44 | 211 | 114 | 58 | 1,188 | | | |
| U183 | ● | 39 D3 WCM_06 | 39 | 32 | 44 | 214 | 117 | 58 | 1,244 | | | |
| U184 | ● | 40 D3 WCM_06 | 40 | 32 | 44 | 218 | 120 | 58 | 1,295 | | | |
| U186 | ● | 41 D3 WCM_06 | 41 | 32 | 49 | 232 | 123 | 58 | 1,465 | | | |
| U188 | ● | 42 D3 WCM_06 | 42 | 32 | 49 | 235 | 126 | 58 | 1,646 | | | |
| U190 | ● | 43 D3 WCM_06 | 43 | 32 | 54 | 239 | 129 | 58 | 1,726 | | | |
| U192 | ● | 44 D3 WCM_06 | 44 | 32 | 54 | 242 | 132 | 58 | 1,916 | | | |
| U194 | ● | 45 D3 WCM_06 | 45 | 40 | 59 | 247 | 135 | 68 | 2,238 | | | |
| U196 | ● | 46 D3 WCM_08 | 46 | 40 | 59 | 251 | 138 | 68 | 2,276 | | | |
| U198 | ● | 47 D3 WCM_08 | 47 | 40 | 59 | 254 | 141 | 68 | 1,919 | | | |
| U200 | ● | 48 D3 WCM_08 | 48 | 40 | 59 | 258 | 144 | 68 | 2,486 | | | |
| U201 | ● | 49 D3 WCM_08 | 49 | 40 | 59 | 261 | 147 | 68 | 5,562 | | | |
| U202 | ● | 50 D3 WCM_08 | 50 | 40 | 59 | 265 | 150 | 68 | 2,725 | | | |
| U203 | ● | 51 D3 WCM_08 | 51 | 40 | 59 | 268 | 153 | 68 | 2,537 | | | |
| U205 | ● | 52 D3 WCM_08 | 52 | 40 | 59 | 271 | 156 | 68 | 2,655 | | | |
| U207 | ● | 53 D3 WCM_08 | 53 | 40 | 59 | 274 | 159 | 68 | 2,740 | | | |
| U209 | ● | 54 D3 WCM_08 | 54 | 40 | 59 | 277 | 162 | 68 | 3,210 | | | |
| U211 | ● | 55 D3 WCM_08 | 55 | 40 | 59 | 280 | 165 | 68 | 3,237 | | | |
| | | | | | | | | | | WCM_0804 KRLY | TC068 M3,5x11 | |

KRLY ucuna uygundur. / Compatible with KRLY insert. / Kompatible für KRLY WP