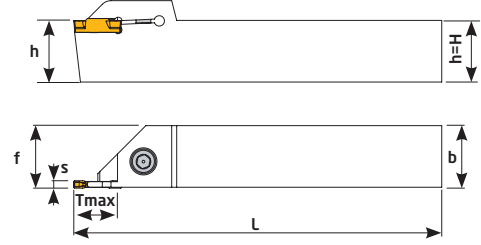
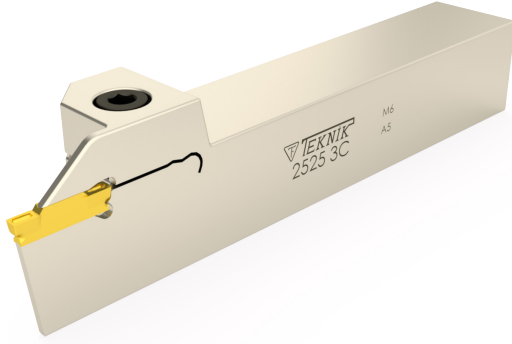


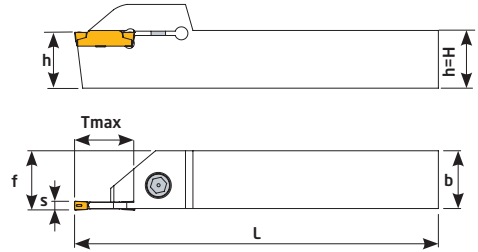
ZCC/R ZT-D



Sipariş Kodu Order Code Best.-Nr.	Stok/Stock/Lager	Ürün Kodu Product Code Produkt-Code	Ölçüler (mm) Dimensions(mm) Abmessungen (mm)							Kullanılan Uç Insert WSP	Sıkma Cıvatası Clamp Screw Inbuss-Schraube	Anahtar Allen Key Inbuss-Schlüssel
			h=H	b	S	Tmax	f	L	kg			
D027	●	1616 3C-R ZT-D	16	16	3	18	16	125	0,301	3C ZT.D ZCC	TC131 M5x16	4 Allen
D028	●	2020 3C-R ZT-D	20	20	3	18	20	125	0,394		TC132 M5x20	
D030	●	2525 3C-R ZT-D	25	25	3	22	25	150	0,755		TC134 M6x20	5 Allen
D036	●	2020 4C-R ZT-D	20	20	4	18	20	125	0,400	4C ZT.D ZCC	TC132 M5x20	4 Allen
D038	●	2525 4C-R ZT-D	25	25	4	22	25	150	0,747		TC134 M6x20	5 Allen
D044	●	2020 5C-R ZT-D	20	20	5	18	20	125	0,391	5C ZT.D ZCC	TC132 M5x20	4 Allen
D046	●	2525 5C-R ZT-D	25	25	5	18	25	150	0,734		TC134 M6x20	5 Allen
D049	●	2525 6C-R ZT-D	25	25	6	18	25	150	0,745	6C ZT.D ZCC	TC134 M6x20	5 Allen
D051	●	3232 6C-R ZT-D	32	32	6	20	32	170	1,331			

ZCC ucuna uygundur. / Compatible with ZCC insert. / Kompatible für ZCC WP

TKT /R TD



Sipariş Kodu Order Code Best.-Nr.	Stok/Stock/Lager	Ürün Kodu Product Code Produkt-Code	Ölçüler (mm) Dimensions(mm) Abmessungen (mm)							Kullanılan Uç Insert WSP	Sıkma Cıvatası Clamp Screw Inbuss-Schraube	Anahtar Allen Key Inbuss-Schlüssel
			h=H	b	S	Tmax	f	L	kg			
D714	●	1212 2C-R TD	12	12	2	16	12	125	0,166	2C TD TGTC	TC131 M5x16	4 Allen
D715	●	1616 2C-R TD	16	16	2	16	16	125	0,270		TC132 M5x20	
D716	●	2020 2C-R TD	20	20	2	16	20	125	0,401		TC134 M6x20	5 Allen
D717	●	2525 2C-R TD	25	25	2	18	25	150	0,728	3C TD TGTC	TC131 M5x16	4 Allen
D718	●	1212 3C-R TD	12	12	2	16	12	125	0,160		TC132 M5x20	
D719	●	1616 3C-R TD	16	16	3	18	16	125	0,256		TC134 M6x20	5 Allen
D720	●	2020 3C-R TD	20	20	3	18	20	125	0,398	4C TD TGTC	TC132 M5x20	4 Allen
D721	●	2525 3C-R TD	25	25	3	18	25	150	0,735		TC134 M6x20	
D722	●	2020 4C-R TD	20	20	4	18	20	125	0,401		TC132 M5x20	4 Allen
D723	●	2525 4C-R TD	25	25	4	18	25	150	0,735	TC134 M6x20	5 Allen	

TGTC ucuna uygundur. / Compatible with TGTC insert. / Kompatible für TGTC WP