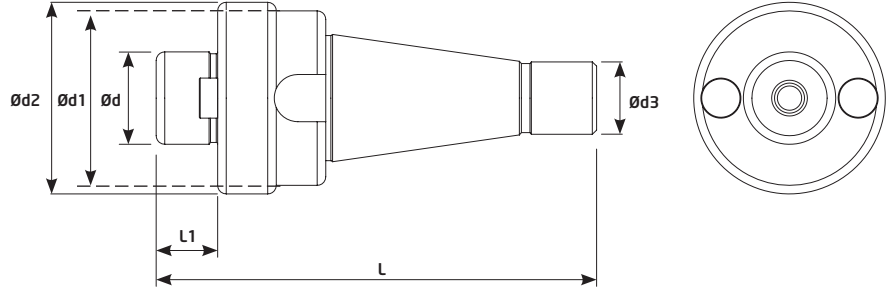
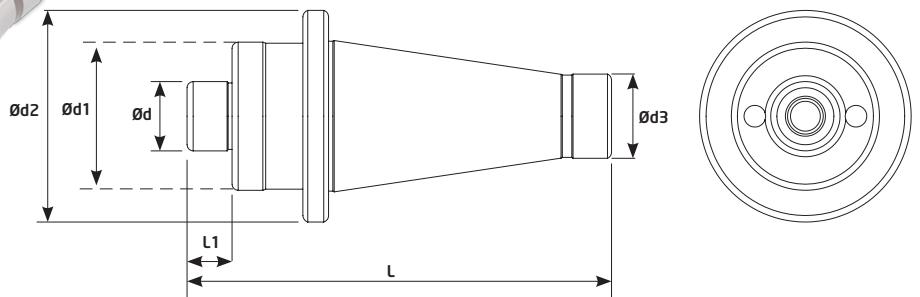


## ISO 40



Sipariş Kodu Order Code Best.-Nr.	Stok/Stock/Lager	Ürün Kodu Product Code Produkt-Code	ŞAFT Shank Schaft	Ölçüler (mm) Dimensions(mm) Abmessungen (mm)						
				d	d1	d2	d3	L	L1	KG
M206	●	ISO 40-16	ISO 40	16	54	38	25	154	17	1,232
M208	●	ISO 40-22	ISO 40	22	54	50	25	154	19	1,371
M210	●	ISO 40-27	ISO 40	27	55	59	25	154	21	1,413
M212	●	ISO 40-32	ISO 40	32	61	67	25	154	24	1,750
M214	●	ISO 40-40	ISO 40	40	61	73	25	154	27	1,956

## ISO 50



Sipariş Kodu Order Code Best.-Nr.	Stok/Stock/Lager	Ürün Kodu Product Code Produkt-Code	ŞAFT Shank Schaft	Ölçüler (mm) Dimensions(mm) Abmessungen (mm)						
				d	d1	d2	d3	L	L1	KG
M216	●	ISO 50-22	ISO 50	22	98	52	39	196	19	3,640
M218	●	ISO 50-27	ISO 50	27	98	61	39	196	21	3,976
M220	●	ISO 50-32	ISO 50	32	98	68	39	196	24	3,817
M222	●	ISO 50-40	ISO 50	40	98	98	39	196	27	4,512
M224	●	ISO 50-60	ISO 50	60	108	108	39	196	26	5,562