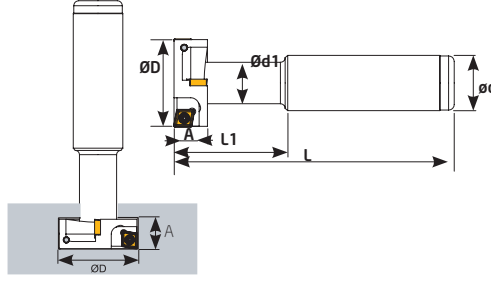


CCMT 0602-09T3-1204

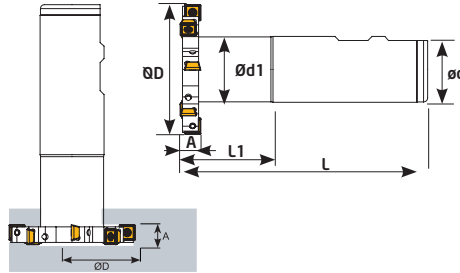
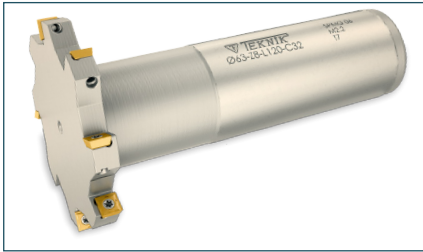


Ölçüler (mm) Dimensions(mm) Abmessungen (mm)		CCMT 0602	CCMT 1204
L	s		
6,2	2,38		
9,4	3,97		
12,4	4,76		

Sipariş Kodu Order Code Best.-Nr.	Stok/Stock/Lager	Ürün Kodu Product Code Produkt-Code	Ölçüler (mm) Dimensions(mm) Abmessungen (mm)								Kullanılan Uç Insert WSP	Sıkma Cıvatası Clamp Screw Torx-Schraube	Anahtar Torx Key Torx-Schlüssel
			ØD	A	Z	ød	ød1	L	L1				
TKÇ096	●	D17 A08 Z02 CCMT 06	17	8	2	16	10	100	28	0,145	CCMT 0602 ISO	TC060 M2,5x5,5	T8
TKÇ098	●	D21 A09 Z02 CCMT 06	21	9	2	16	11	100	31,5	0,151			
TKÇ100	●	D25 A11 Z04 CCMT 06	25	11	4	20	15	100	32,5	1,232			
TKÇ102	●	D32 A12 Z04 CCMT 06	32	12	4	20	15	100	40	0,300	CCMT 09T3 ISO	TC067 M3,5x9	T15
TKÇ103	●	D32 A14 Z04 CCMT 09	32	14	4	25	16	100	33	0,434			
TKÇ104	●	D35 A15 Z04 CCMT 09	35	15	4	25	14	100	52	0,447			
TKÇ106	●	D40 A17 Z04 CCMT 09	40	17	4	25	20	110	50	0,509	CCMT 1204 ISO	TC083 M5x12	T20
TKÇ108	●	D50 A20 Z04 CCMT 12	50	20	4	32	26	110	50	0,691			
TKÇ120	●	D63 A09 Z08 CCMT 06	63	9	8	32	19,5	125	37	0,842			
TKÇ122	●	D80 A09 Z10 CCMT 06	80	9	10	32	31,5	120	32	1,025	CCMT 0602 ISO	TC060 M2,5x5,5	T8

CCMT 0602-09T3-1204 ISO'dur./ CCMT 0602-09T3-1204 is ISO./ Kompatible für ISO WP

SPMG 05-06-07



Ölçüler (mm) Dimensions(mm) Abmessungen (mm)		SPMG 0502	SPMG 0904
L	s		
5	2,38		
6			
7,94	3,97		

Sipariş Kodu Order Code Best.-Nr.	Stok/Stock/Lager	Ürün Kodu Product Code Produkt-Code	Ölçüler (mm) Dimensions(mm) Abmessungen (mm)								Kullanılan Uç Insert WSP	Sıkma Cıvatası Clamp Screw Torx-Schraube	Anahtar Torx Key Torx-Schlüssel
			ØD	A	Z	ød	ød1	L	L1				
TKÇ050	●	D50 A05 Z07 SPMG 05	50	5	7	32	31,5	120	45	0,830	SPMG 05 TGTC	TC058 M2x4,2	T6
TKÇ052	●	D63 A05 Z08 SPMG 05	63	5	8	32	31,5	120	45	0,861			
TKÇ054	●	D50 A06 Z07 SPMG 06	50	6	7	32	31,5	120	45	0,833			
TKÇ056	●	D63 A06 Z08 SPMG 06	63	6	8	32	31,5	120	45	0,850	SPMG 06 TGTC	TC059 M2,2x5	T7
TKÇ058	●	D80 A06 Z10 SPMG 06	80	6	10	32	31,5	120	45	0,944			
TKÇ060	●	D50 A08 Z06 SPMG 06	50	8	6	32	31,5	120	45	0,839			
TKÇ062	●	D63 A08 Z08 SPMG 06	63	8	8	32	31,5	120	45	0,874	SPMG 07 TGTC	TC063 M2,5x7	T8
TKÇ064	●	D80 A08 Z10 SPMG 06	80	8	10	32	31,5	120	45	0,995			
TKÇ066	●	D50 A10 Z06 SPMG 07	50	10	6	32	31,5	120	45	0,496			
TKÇ068	●	D63 A10 Z08 SPMG 07	63	10	8	32	31,5	120	45	0,868	SPMG 07 TGTC	TC063 M2,5x7	T8
TKÇ070	●	D80 A10 Z10 SPMG 07	80	10	10	32	31,5	120	45	0,994			

TGTC ucuna uygundur./ Compatible with TGTC insert./ Kompatible für TGTC WP