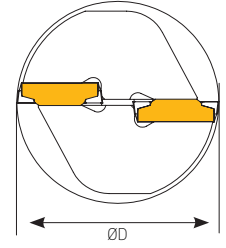
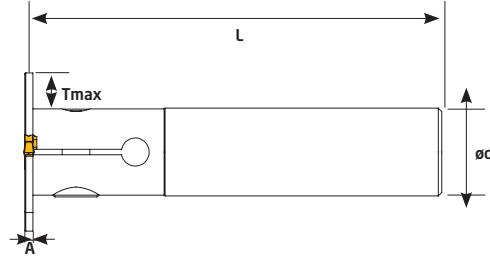


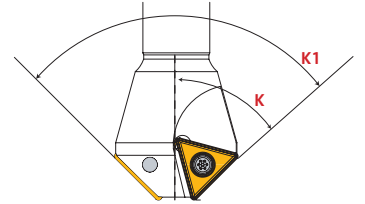
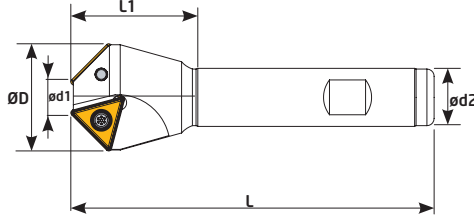
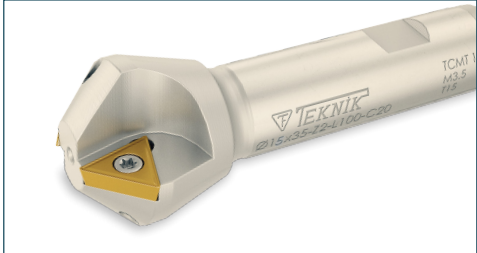
## DAIRE KANAL TAKIMI /Round Milling Cutter



Sipariş Kodu Order Code Best.-Nr.	Stok/Stock/Lager	Ürün Kodu Product Code Produkt-Code	Ölçüler (mm) Dimensions(mm) Abmessungen (mm)							Kullanılan Uç Insert WSP	Sıkma Civatası Clamp Screw Torx-Schraube	Anahtar Torx Key Torx-Schlüssel
			ØD	A	Z	L	ød	Tmax	kg			
TKÇ300	●	D50 A03 Z02 L-120	50	3	2	120	25	12,75	0,498	MGM 3C KRLY	M8	6 Allen
TKÇ301	●	D63 A03 Z02 L-120	63	3	2	120	25	19,25	0,543			
TKÇ302	●	D80 A03 Z02 L-120	80	3	2	120	32	24,25	0,841			
TKÇ303	●	D50 A04 Z02 L-120	50	4	2	120	25	12,75	0,536	MGM 4C KRLY	M8	6 Allen
TKÇ304	●	D63 A04 Z02 L-120	63	4	2	120	25	19,25	0,556			
TKÇ305	●	D80 A04 Z02 L-120	80	4	2	120	32	24,25	0,860			
TKÇ306	●	D55 A05 Z02 L-120	55	5	2	120	25	15,25	0,513	MGM 5C KRLY	M8	6 Allen
TKÇ307	●	D63 A05 Z02 L-120	63	5	2	120	25	19,25	0,529			
TKÇ308	●	D80 A05 Z02 L-120	80	5	2	120	32	24,25	0,860			

KRLY ucuna uygundur. / Compatible with KRLY insert. / Kompatible für KRLY WP

## TCMT 1102 16T3 HAVŞA / Chamfer End Mills



Sipariş Kodu Order Code Best.-Nr.	Stok/Stock/Lager	Ürün Kodu Product Code Produkt-Code	Ölçüler (mm) Dimensions(mm) Abmessungen (mm)										Kullanılan Uç Insert WSP	Sıkma Civatası Clamp Screw Torx-Schraube	Anahtar Torx Key Torx-Schlüssel
			K	K1	ød1	ØD	Z	ød2	L	L1	kg				
S337	●	06-20 Z01 K30° TCMT 16	30°	60°	6	20	1	16	100	37	0,170	TCMT 16T3 ISO	TC067 M3,5x8,5	T15	
S345	●	10-34 Z02 K30° TCMT 16	30°	60°	10	34	2	20	100	40	0,307				
S343	●	24-39 Z02 K30° TCMT 16	30°	60°	24	39	2	20	100	36	0,356				
S334	●	04-16 Z01 K45° TCMT 11	45°	90°	4	16	1	16	100	35	0,140	TCMT 1102 ISO	TC060 M2,5x5,5	T8	
S341	●	06-24 Z01 K45° TCMT 16	45°	90°	6	24	1	20	100	30	0,256				
S336	●	10-31 Z02 K45° TCMT 16	45°	90°	10	31	2	16	100	35	0,204				
S338	●	14-35 Z02 K45° TCMT 16	45°	90°	14	35	2	20	100	35	0,324	TCMT 16T3 ISO	TC067 M3,5x8,5	T15	
S340	●	22-43 Z03 K45° TCMT 16	45°	90°	22	43	3	25	100	37	0,634				
S342	●	32-53 Z03 K45° TCMT 16	45°	90°	32	53	3	25	100	37	0,634				
S335	●	02-18 Z01 K60° TCMT 11	60°	120°	2	18	1	16	100	35	0,157	TCMT 1102 ISO	TC060 M2,5x5,5	T8	
S339	●	10-31 Z02 K60° TCMT 16	60°	120°	10	31	2	16	100	35	0,213				